



Order no.: 034210

Double-sided step ladder
GFRP

Number of steps

- 2x4
- 2x5
- 2x6
- 2x7

Specification

Working height 2.7 m	Step design Steps	Number of steps/rungs 2x 5 steps	Step depth 80 mm	Step/Rung distance 235 mm
Height 1.23 m	Ladder length 1.31 m	Base spread 1.01 m	Inclination 70 °	Lower outer width 500 mm
Upper outer width 364 mm	Depth of side-rails 73 mm	Width of side-rails 25 mm	Max. load capacity 150 kg	Design type Freestanding Double-sided access
BG BAU supported No	Weight 11.7 kg	Transport dimensions 1306 x 506 x 220 mm, 11.7 kg	Business division MUNK Günzburger Steigtechnik	Article no. 034210
Price € 765.00				

Facts

- Double-sided stepladder made of GFRP
- Side-rails and steps made of glass-fibre reinforced plastic profiles (min. 10 years ageing resistance when stored and used as intended)
- High-strength step-to-side-rail connection

- Conical side-rail guide for safe stance
- nivello® ladder shoes with patented 2-axis inclination technology
- Transport securing straps
- Solid, powder-coated, galvanised steel hinges with screw connection
- Spreader lock with two high-strength polyester straps
- Step spacing: 235 mm
- Ladder inclination: 70°
- Maximum load: 150 kg
- Suitable for working near or on live parts
- Tested to EN 61478:2002 + A1 (2004), 6.5.1 Category 2: 60,000 V
- Note: Products with GRP content are excluded from exchange due to their sensitivity, the statutory warranty applies (resistance to ageing 10 years).

Scope of supply

- Ladder: 1 x

Information on sustainability criteria

- Corporate certification: ISO 9001
- Corporate certification: EN 1090
- Corporate certification: EcoVadis
- RoHS
- REACH
- The MUNK Group complies with a Code of Conduct
- The Supply Chain Act does not apply due to our size
- The materials used are listed in the technical specification
- Resource-saving production: own photovoltaic systems
- Energy-efficient consumption during production: LED lighting
- Repairability, durability and quality: 15-year warranty on series products made in Germany

- Recyclability: Our products are mostly made of aluminium, steel or wood and can be fed directly into the recycling process.
- Socially acceptable working conditions in production: fair wages, gender equality
- Economical and recyclable packaging: no use of polystyrene, predominantly use of wood and cardboard, small amounts of plastic
- No health hazards for the users

More product pictures



Added value

Industrial grade

Stable and robust for tough everyday working life (including 4-way edging)

- Corrosion-resistant fixtures
- Use of high-quality and high-strength materials
- Versatile and practical accessories



Storage tray

- For the practical storage of small parts
- Made from high-quality plastic
- Partly with integrated hooks and tool holders
- Different versions, depending on the ladder model



Ladder joint safe-cap

- Smooth ladder joint with large contact surface and sturdy plastic protective cap
- The 6 rivets and thicker wall thickness provide for greater stability and protection at this sensitive point on the ladder, increasing its service life
- The safe-cap protects the ladder when in use, when loading and storing, as well as the contact surfaces, walls, truck loading areas and the joint itself



clip-step step padding

Optimised and certified non-slip protection for greater comfort and safety

- Made of grooved plastic
- Exact fit and easy to clip onto the steps
- Applied up to the maximum accessible step as a visual check
- Retrofittable and available as spare part



The movable ladder shoe sets new standards in stability

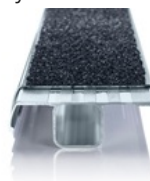
[Learn more](#)



clip-step R 13 step padding

Certified non-slip protection for step ladders

- Fulfils the requirements of the highest possible non-slip class R 13 thanks to aluminium oxide particles
- Improves work safety in wet and oil-contaminated environments
- Applied up to the maximum accessible step as a visual check
- Retrofittable, available as a spare part and also in yellow in selected lengths (RAL 1021)



Rung Safe R 13

Certified non-slip protection for rung ladders

- Fulfills the requirements of the highest possible non-slip class R 13 thanks to aluminium oxide particles
- Improves work safety in wet and oil-contaminated environments
- Applied up to the maximum accessible rung as a visual check



ergo-pad® grip area

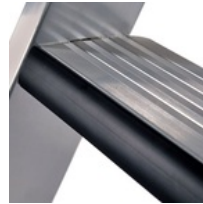
For easier and more ergonomic handling at the optimum carrying point



relax step® step padding

Greater comfort during prolonged periods of working on the ladder

- Worked into the leading edge of the step
- Pads the front edge of the ladder step
- Comfortable cushioning for leaning and bracing against the next step

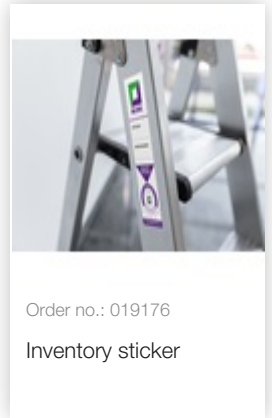
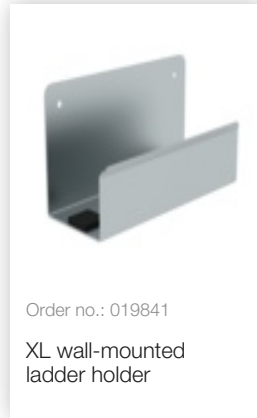
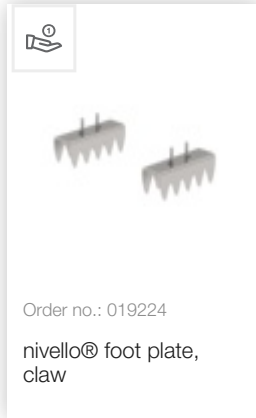
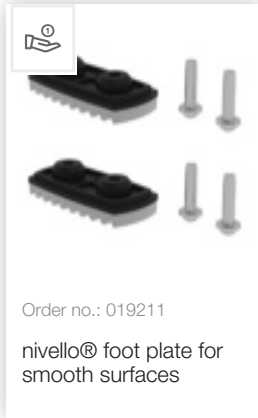
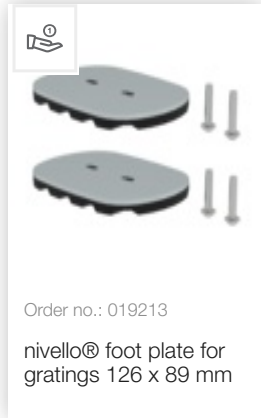


Spring-loaded castors

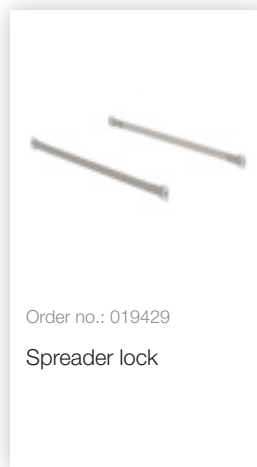
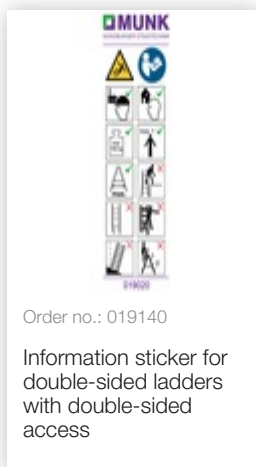
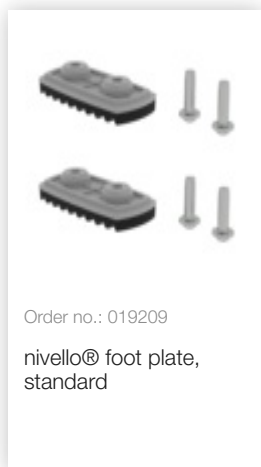
- High stability, easy to change position
- Easy to move the ladder when it is set up
- Self-locking
- Also retrofittable and available as a spare part



Accessories



Spare parts



Corporate certifications

on sustainability criteria

